



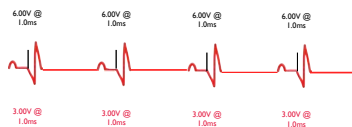
Common pacemaker problems and resolutions

Troubleshooting with vectors

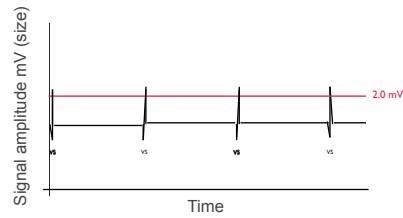
Classic clinic concerns



- Slightly high thresholds
- Small signal amplitudes



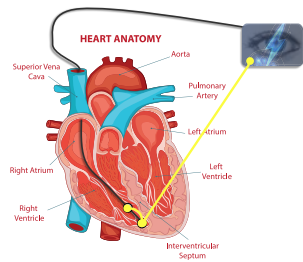
High thresholds



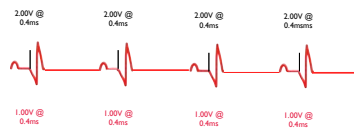
Small amplitudes



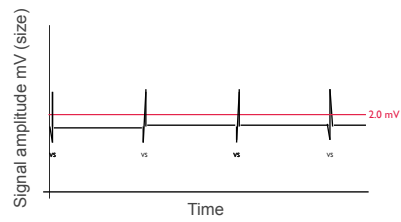
Don't panic!



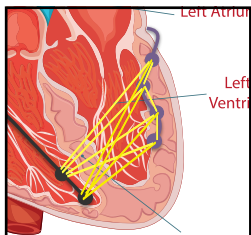
Try a different pacing circuit?



High thresholds



Small amplitudes



Quadripolar leads

Takeaway message



If the intrinsic signal amplitude is **small** or the threshold is **high**, then try an **alternative** pacing circuit and see if it helps!
